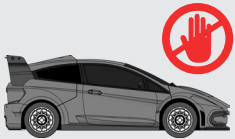


## PURPOSE

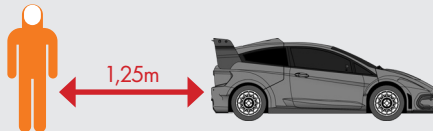
This Rallycross information applies to **RALLYCROSS MEDIA TEAMS, VIP, SCRUTINEERS AND MARSHALS** in the garages, paddock or racetrack to stay safely in the vicinity and to react properly in case of an emergency. Interactions with the race car can cause electrical injuries:

**electric shock, electric arc, electric discharge as well as chemical risks and the risk of fire**

## GENERAL INFORMATION



don't touch the vehicle



keep safety distance of 1,25m if situation is unclear



contact teambox or race control, if situation is unclear



medical care in the medical center. In case of emergency, contact FIA officials or team members

## HAZARDS



electrical hazards: 800 V high-voltage



risk of fire at the car and surrounding area



risk of battery thermal runaway



chemical risk of hazardous gases



chemical risk of corrosive liquids

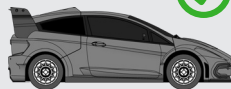
## RALLYCROSS VEHICLE - SAFE CONDITION



**GREEN LIGHT**



Racecar green Indicator Status Light or green light panel



vehicle is safe

## RALLYCROSS VEHICLE - ACTIVE SYSTEM



Racecar constant white ready-to-move-light (back & front of the car)

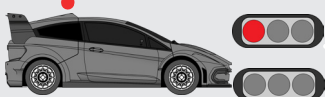


vehicle will move (flashing: car may move)

## RALLYCROSS VEHICLE - UNSAFE CONDITION



**RED LIGHT**



Red or unclear Indicator Status Light or red light panel



vehicle is unsafe

## CHEMICAL LEAKAGE



chemical liquids on or near the car



chemical risk of corrosive liquids, do not touch!

## EMERGENCY - FIRE



fire on or near the racecar in the garage or in the paddock

OR



battery fire or smoke/ hazardous gases



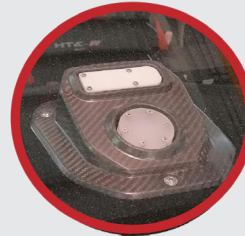
Exit the area immediately

IMPORTANT COMPONENTS ON THE RACECAR

DRIVER MASTER SWITCH (DMS)



READY-TO-MOVE LIGHT



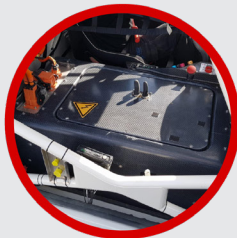
EXTINGUISHER SYSTEM



STATUS LIGHT

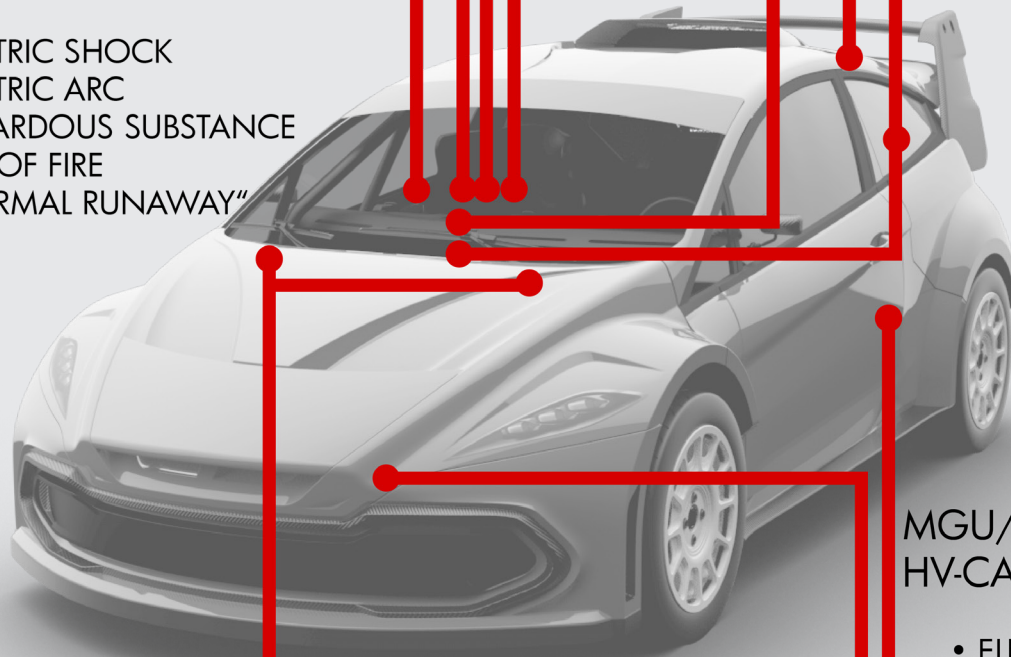


EMERGENCY STOP SWITCH



BATTERY (RESS)

- ELECTRIC SHOCK
- ELECTRIC ARC
- HAZARDOUS SUBSTANCE
- RISK OF FIRE
- "THERMAL RUNAWAY"



MGU/ INVERTER/ HV-CABLES

- ELECTRIC SHOCK
- ELECTRIC ARC
- RISK OF FIRE

EXTINGUISHER HANDLES + NEUTRAL SWITCH

